

Hybrid ferry Elektra



Investor:
Finnferries

Project:
Hybrid ferry Elektra

FAST scope of work:
Surface protection, insulation
and interiors outfitting

FAST Project Manager:
Marcin Halaburda,
marcin.halaburda@fast.pl



Hybrid ferry Elektra

FAST ended works on double-ended hybrid ferry Elektra, built in Crist shipyard for Finnish owner Finnferries. FAST scope of work included surface protection, insulation and comprehensive interiors outfitting – crew cabins, bridge and gym. The ecological vessel, one of the few in Europe, has hybrid drive – combustion-electric with rechargeable batteries. The ship of the overall length 96 m and width

of 15 m will be operated by only 3 persons crew, and during hard weather may be optionally driven by three generating sets based on combustion engines. They will be adapted to unfavourable climate conditions - system based on Siemens components, life of min. 10 years, has potential to cope with northerly low temperatures and heavy snowfalls.



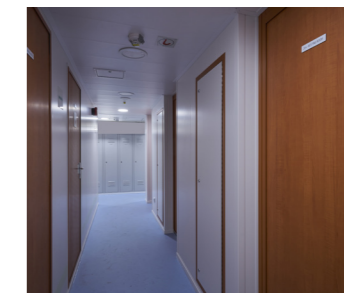
Marcin Halaburda,
marcin.halaburda@fast.pl



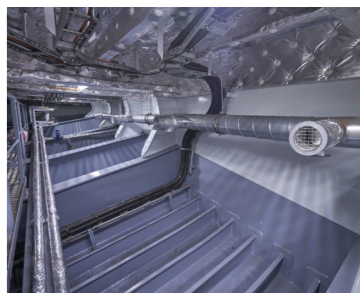
Crew cabins



Sauna



Corridors



Insulation